

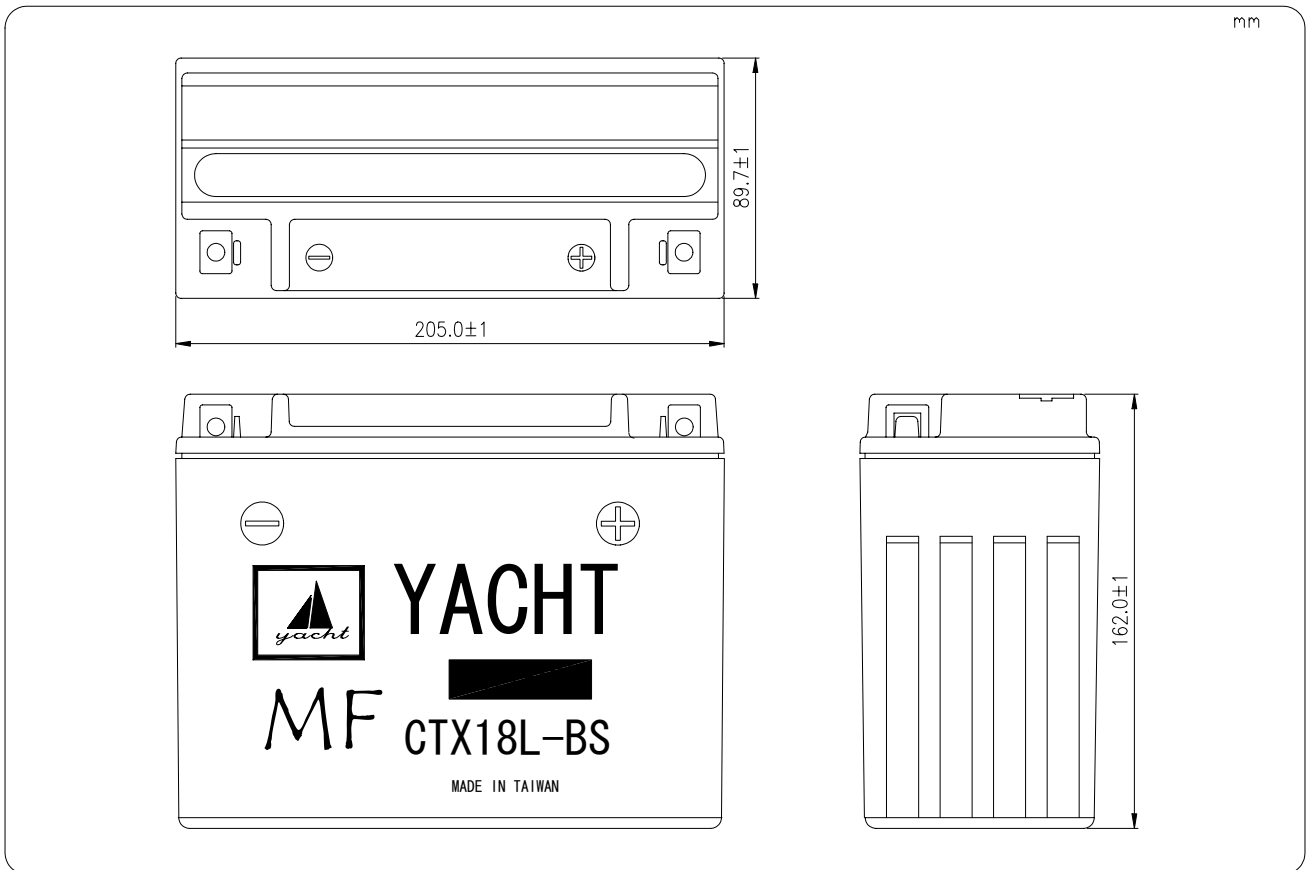
MOTORCYCLE LEAD-ACID BATTERY

CTX18L-BS

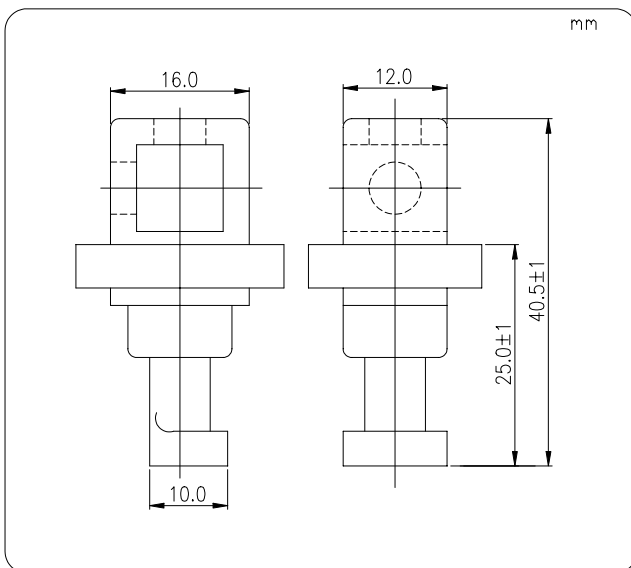
12V 21Ah

TYPE		CTX18L-BS	
NOMINAL VOLTAGE		12V	
NOMINAL CAPACITY		21AH/10HR	
DIMENSIONS			
LENGTH	205.0 mm	TOTAL LENGTH	205.0 mm
WIDTH	89.7 mm	TOTAL WIDTH	89.7 mm
HEIGHT	162.0 mm	TOTAL HEIGHT	162.0 mm
WEIGHT		APPROX.5.4 KGS	

Dimension



Terminal



Screw

