

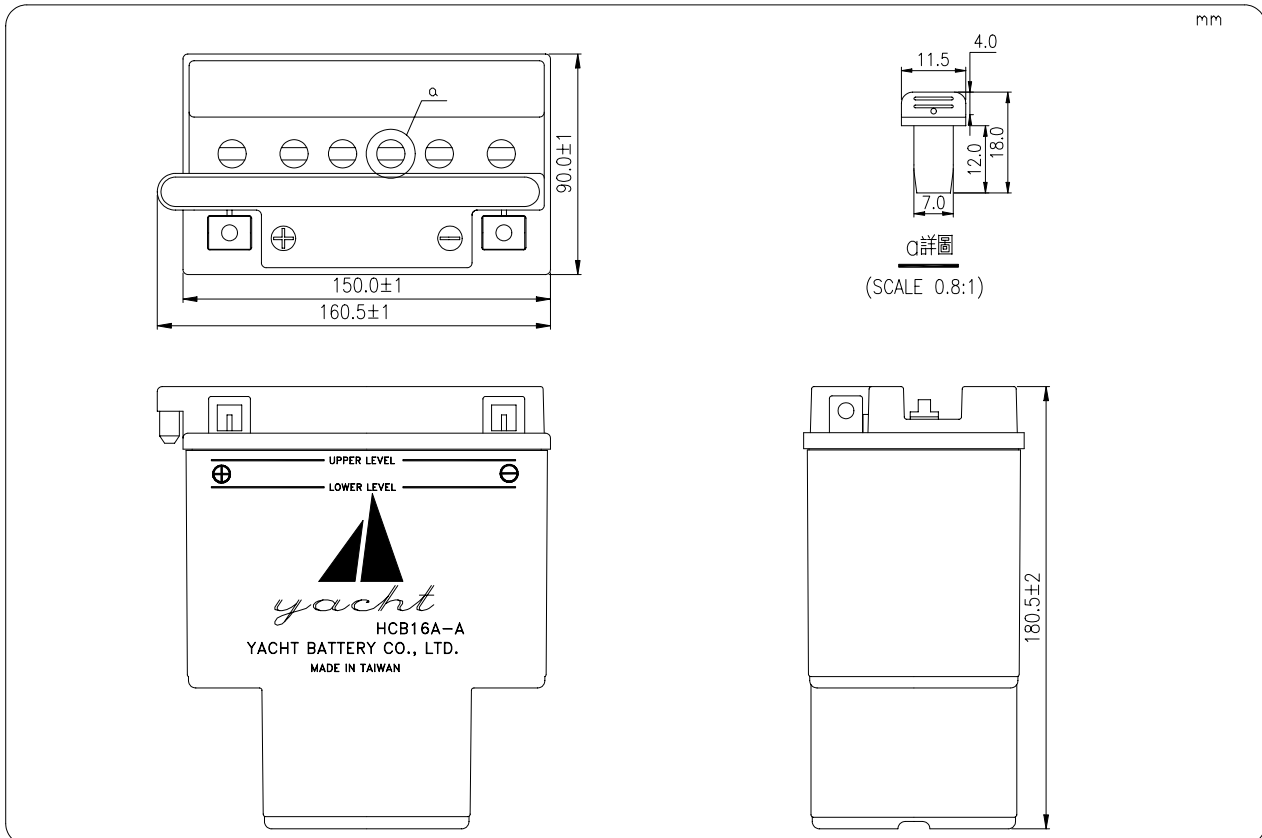
# MOTORCYCLE LEAD-ACID BATTERY

**HCB16A-A**

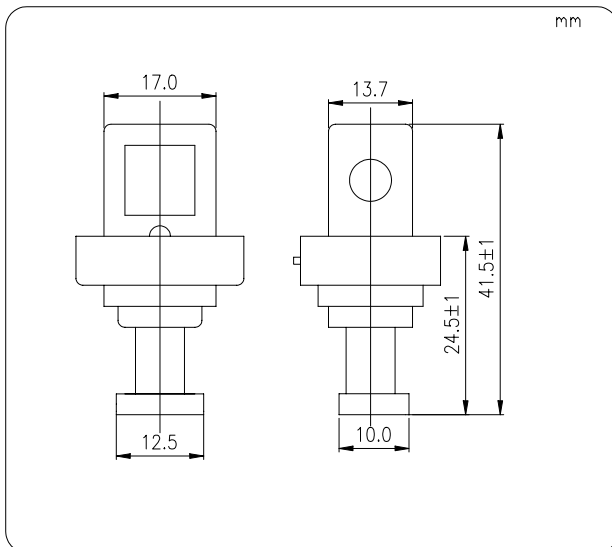
**12V 16Ah**

TYPE		HCB16A-A	
NOMINAL VOLTAGE		12V	
NOMINAL CAPACITY		16AH/10HR	
DIMENSIONS			
LENGTH	150.0 mm	TOTAL LENGTH	160.5 mm
WIDTH	90.0 mm	TOTAL WIDTH	90.0 mm
HEIGHT	180.5 mm	TOTAL HEIGHT	180.5 mm
WEIGHT		APPROX. 3.9 KGS	

## Dimension



## Terminal



## Screw

