

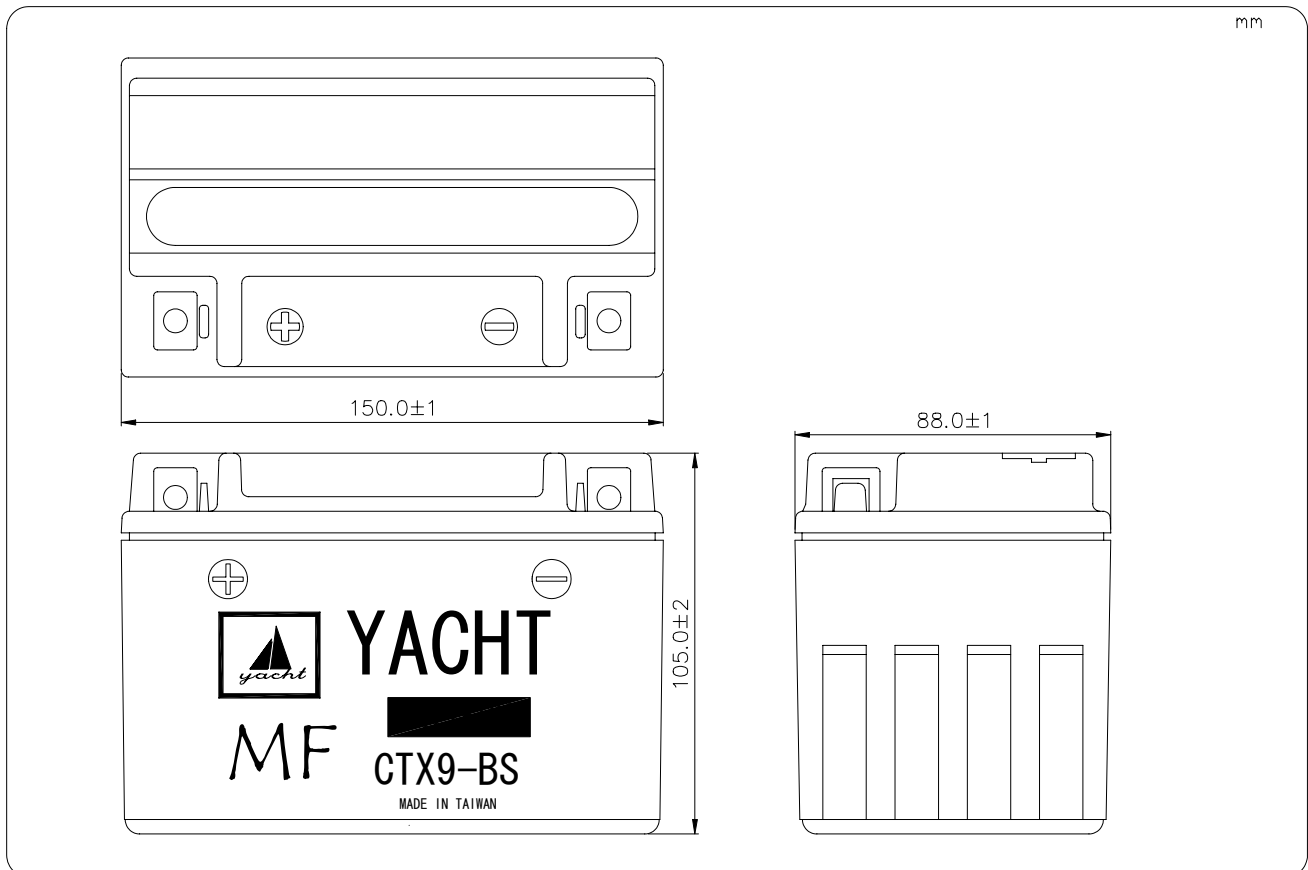
MOTORCYCLE LEAD-ACID BATTERY

CTX9-BS

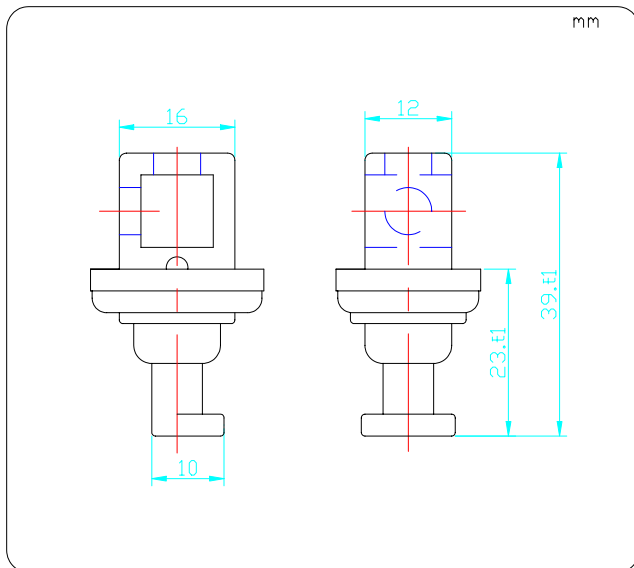
12V 8Ah

TYPE		CTX9-BS	
NOMINAL VOLTAGE		12V	
NOMINAL CAPACITY		8AH/10HR	
DIMENSIONS			
LENGTH	150.0 mm	TOTAL LENGTH	150.0 mm
WIDTH	87.4 mm	TOTAL WIDTH	87.4 mm
HEIGHT	105.0 mm	TOTAL HEIGHT	105.0 mm
WEIGHT		APPROX. 2.29 KGS	

Dimension



Terminal



Screw

