

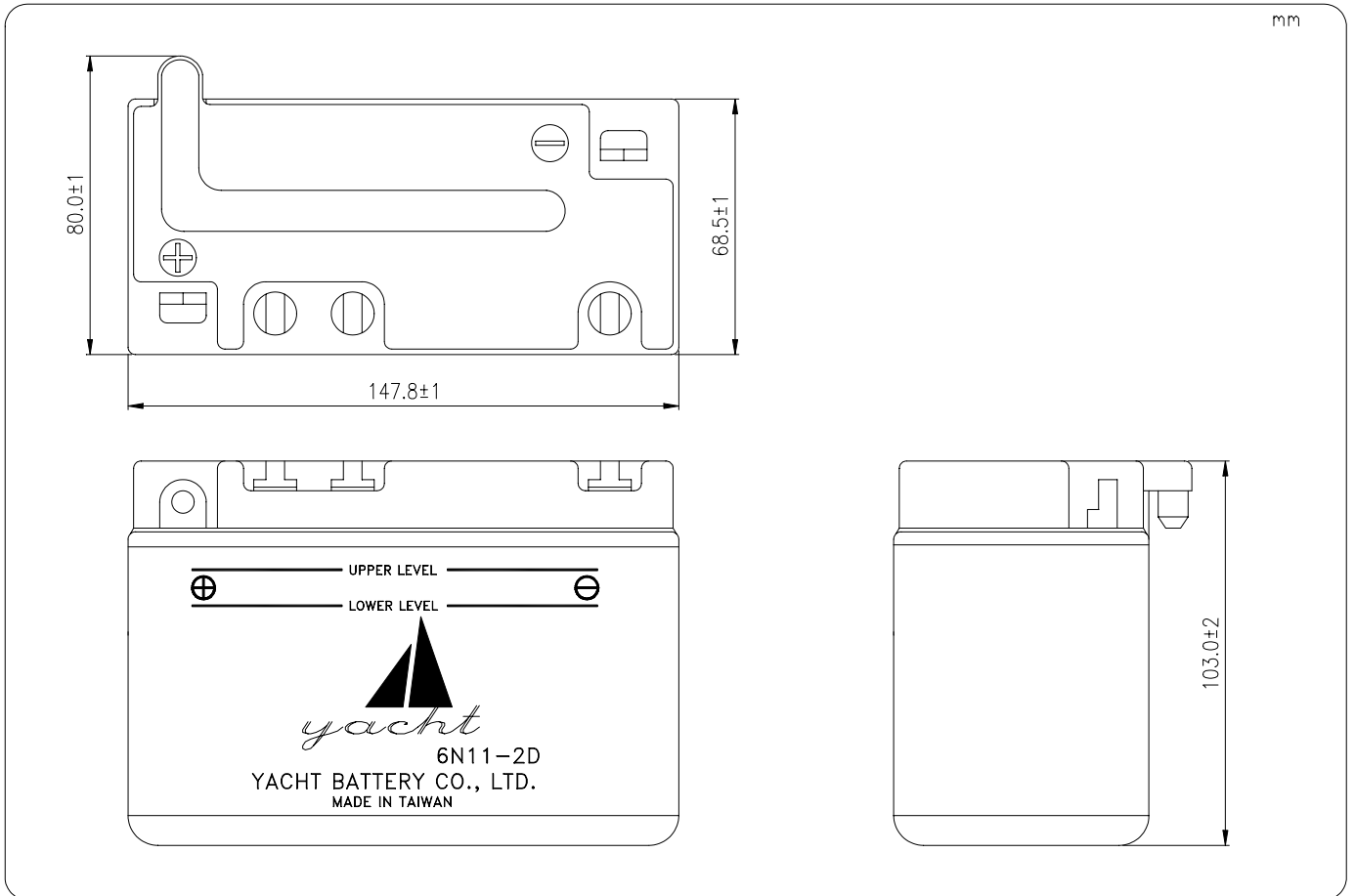
MOTORCYCLE LEAD-ACID BATTERY

6N11-2D

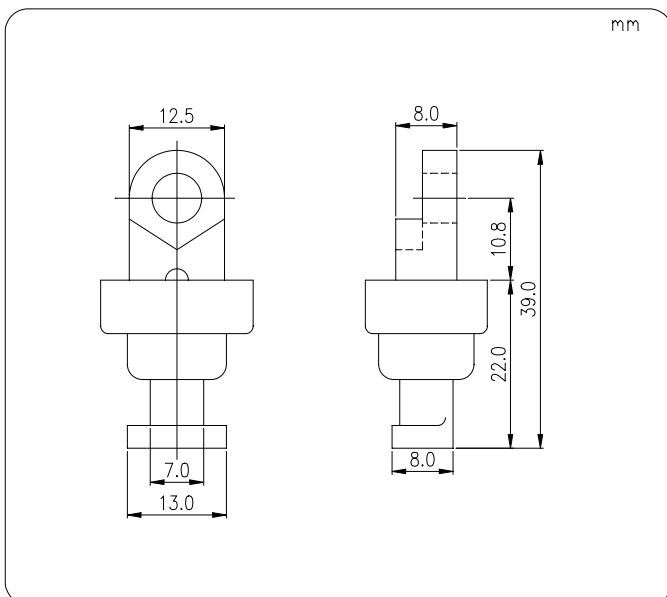
6V 11Ah

| TYPE | | 6N11-2D | |
|------------------|----------|----------------|----------|
| NOMINAL VOLTAGE | | 6V | |
| NOMINAL CAPACITY | | 11AH/10HR | |
| DIMENSIONS | | | |
| LENGTH | 147.8 mm | TOTAL LENGTH | 147.8 mm |
| WIDTH | 68.5 mm | TOTAL WIDTH | 68.5 mm |
| HEIGHT | 103.0 mm | TOTAL HEIGHT | 103.0 mm |
| WEIGHT | | APPROX.1.5 KGS | |

Dimension



Terminal



Screw

