

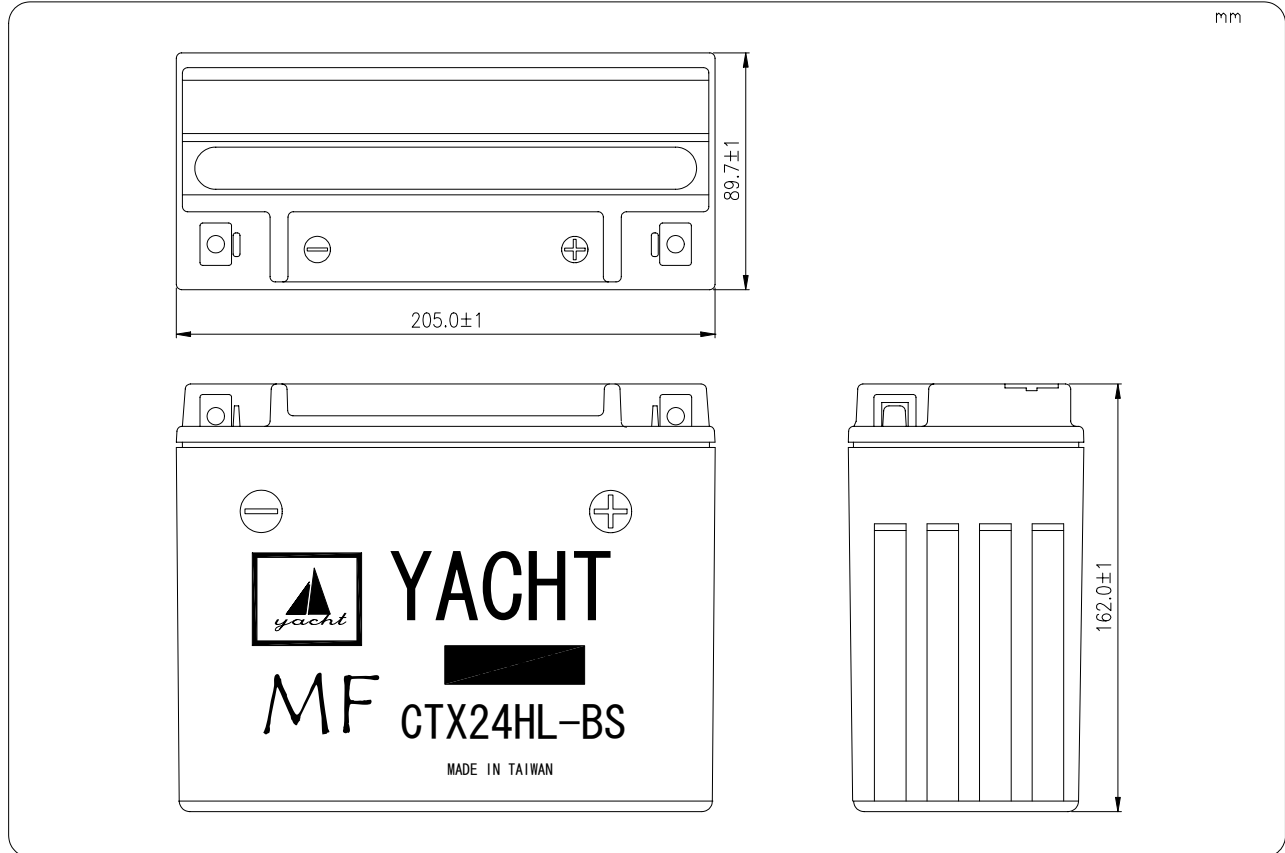
# MOTORCYCLE LEAD-ACID BATTERY

**CTX24HL-BS**

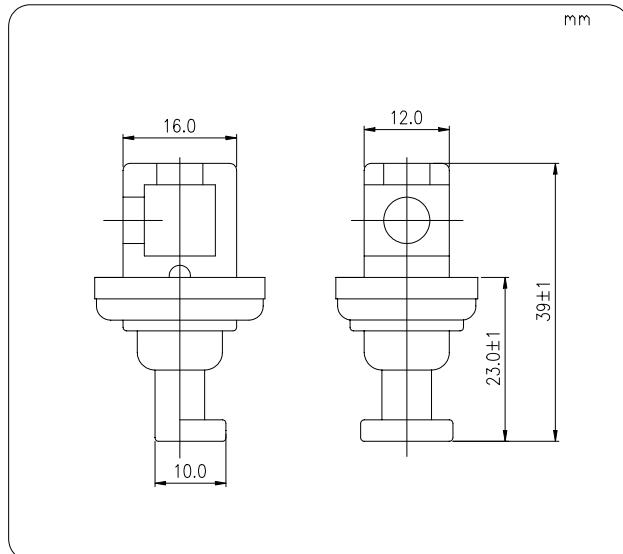
**12V 21Ah**

TYPE		CTX24HL-BS	
NOMINAL VOLTAGE		12V	
NOMINAL CAPACITY		21AH/10HR	
DIMENSIONS			
LENGTH	205.0 mm	TOTAL LENGTH	205.0 mm
WIDTH	89.7 mm	TOTAL WIDTH	89.7 mm
HEIGHT	162.0 mm	TOTAL HEIGHT	162.0 mm
WEIGHT		APPROX.6.1 KGS	

Dimension



Terminal



Screw

