

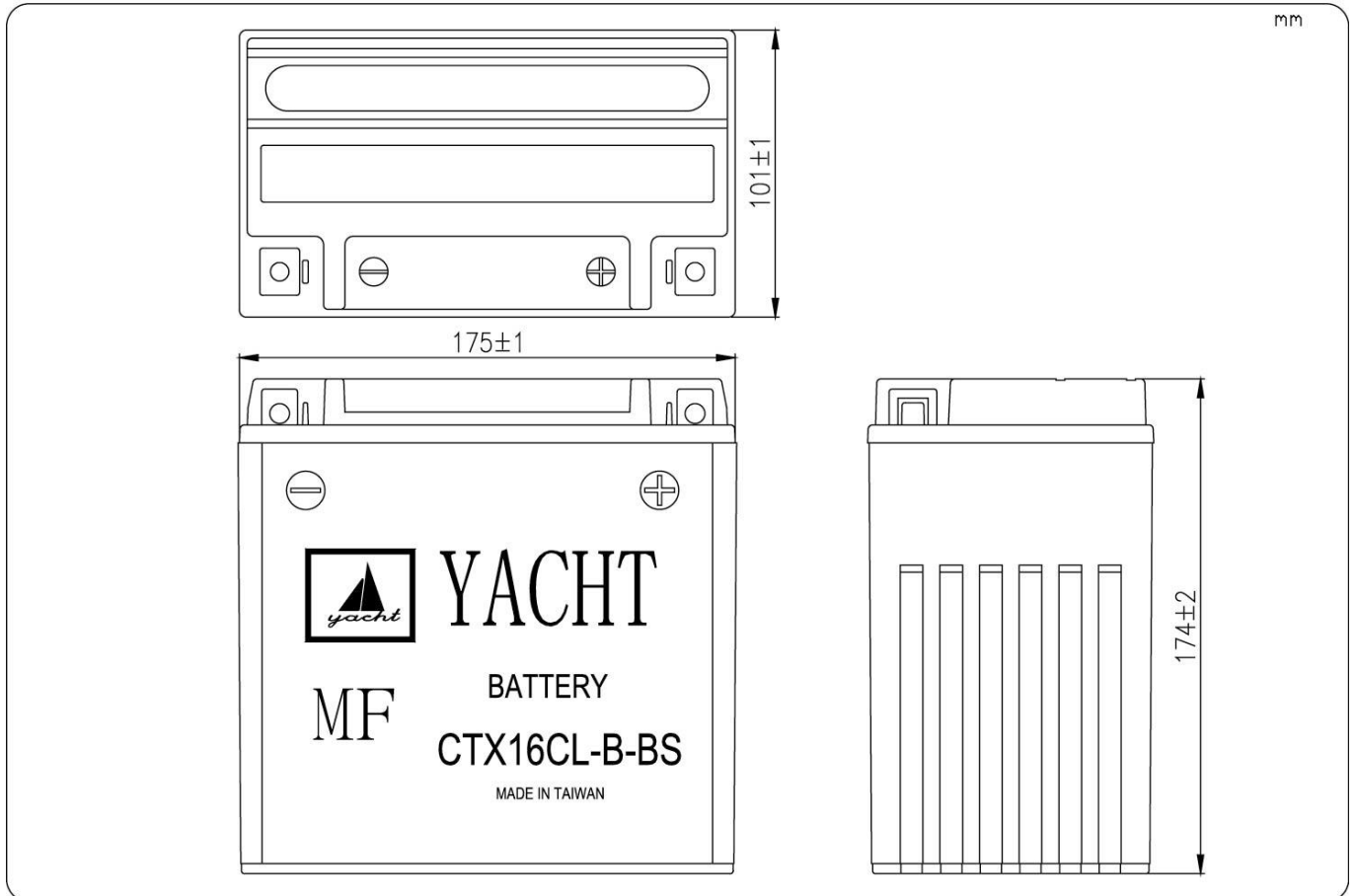
MOTORCYCLE LEAD-ACID BATTERY

CTX16CL-B-BS

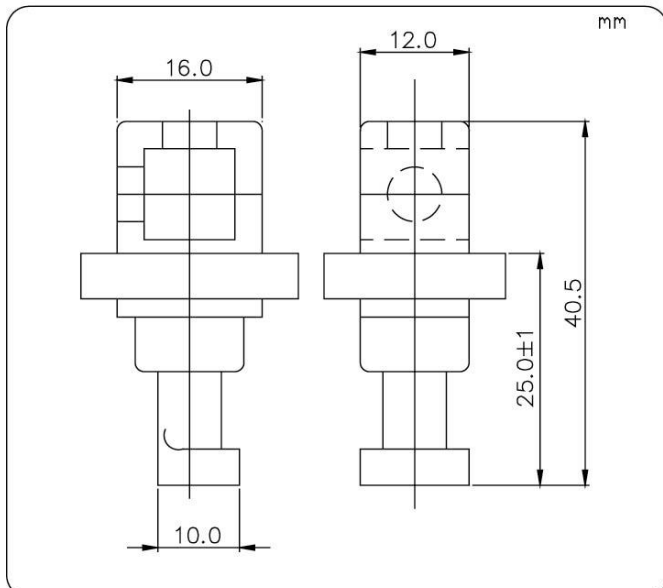
12V 19Ah

TYPE	CTX16CL-B-BS	
NOMINAL VOLTAGE	12V	
NOMINAL CAPACITY	19AH/10HR	
DIMENSIONS	LENGTH	175 mm
	WIDTH	101 mm
	HEIGHT	174 mm
MAINTENANCE FREE BATTERY	APPROX. 5.65 KGS	
FACTORY ACTIVATED SEALED BATTERY	APPROX. 7.20 KGS	

Dimension



Terminal



Screw

